

Old Town Retail/Office Space

449 N Mosley St Wichita, KS 67202



Leasing Information

Space Available: 3,315 SF
Lease Rate: \$1,650/Month
Lease Type: Modified Gross

Demographics

Population Within 5 Miles: 227,359
Median Household Income: \$39,480
Traffic Count (Central Ave): 17,717

Statistics Provided by  esri

Multiple Uses, Great Value!

- ✓ Doorside parking available
- ✓ Visible from Central Ave
- ✓ Tall ceilings and classic wood flooring
- ✓ Room for retail, storage, and office
- ✓ Retail space can be adapted using sliding partition walls

Contact Information

Levi Iseman
(316) 618-1100
levi@insitere.com

Carl Hebert, CCIM
(316) 618-1100
cjhebert@insitere.com

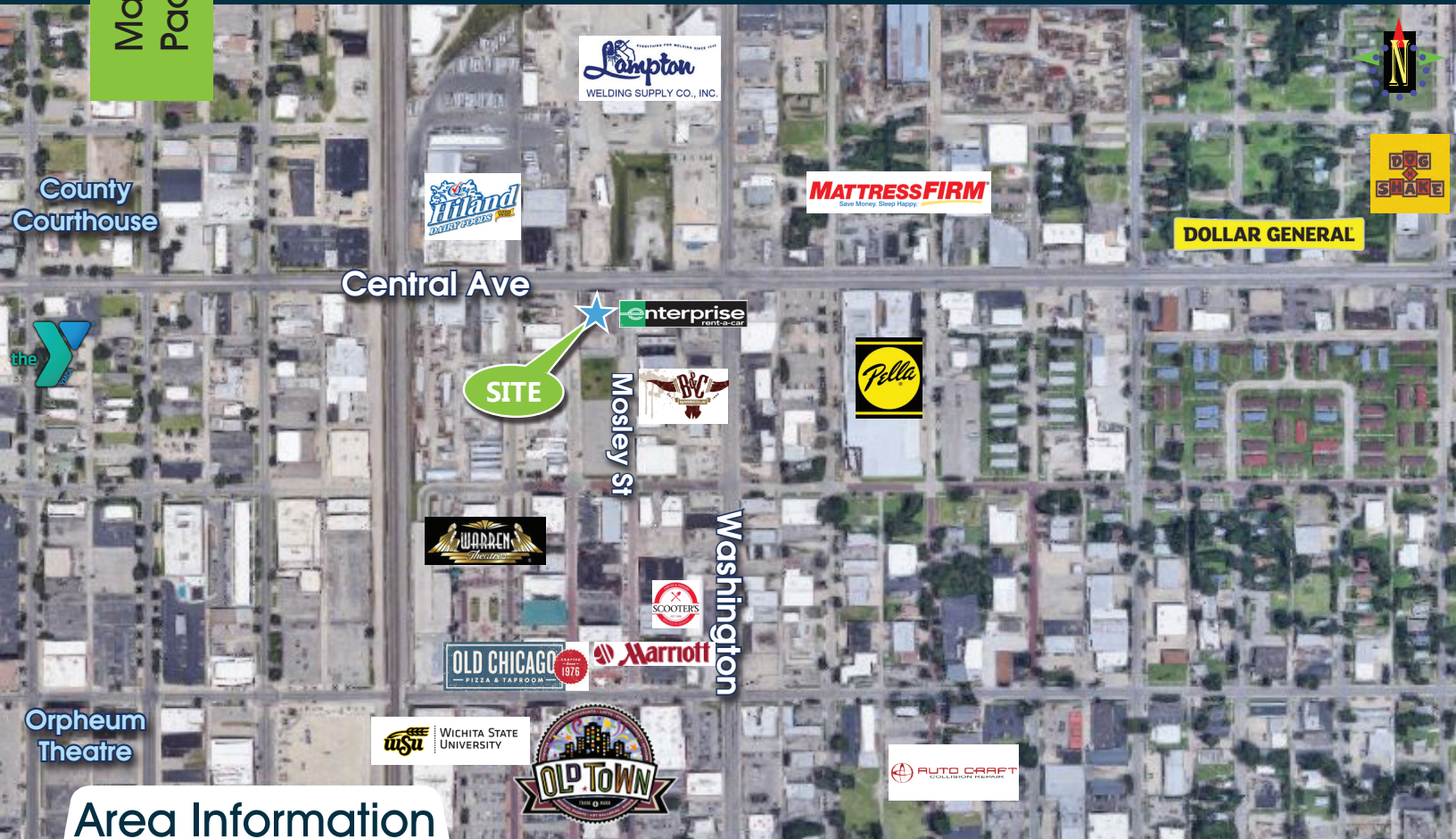
Like/Follow us!
  

InSite
REAL • ESTATE • GROUP

www.InSiteRe.com

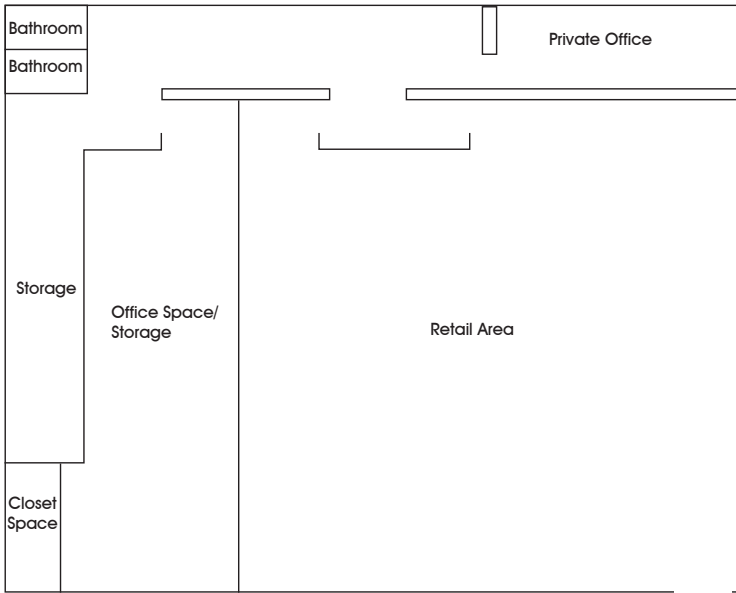
Old Town Retail/Office Space

449 N Mosley St Wichita, KS 67202



Area Information

Area Neighbors: Lampton Welding Supply, Mattress Firm Warehouse, Pella Windows and Doors, Enterprise, Hiland Dairy, YMCA, County Courthouse, Marriot, Wichita State Downtown, Orpheum Theatre, Old Town Restaurants and Retail, Autocraft Collision Repair, Old Chicago, Dollar General, Dog N Shake, Scooters Coffee, and many more!!



Contact Information

Levi Iseman
 (316) 618-1100
 levi@insitere.com

Carl Hebert, CCIM
 (316) 618-1100
 cjhebert@insitere.com



www.InSiteRe.com